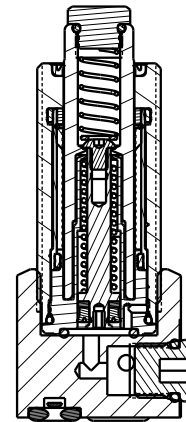




SEE IS1023 FOR SERVICE INSTRUCTIONS.
LUBRICATE ALL SEALS WITH CLEAN HYDRAULIC OIL
PRIOR TO ASSEMBLY.
DO NOT USE SILICONE BASED LUBRICANTS.



APPLY MEDIUM STRENGTH
THREAD LOCKER (BLUE)
TORQUE TO 80 IN-LB

TORQUE TO
11 IN-LB

PLUNGER
These work supports are fully
rebuildable to full factory original
capacity by any authorized Vekttek repair
facility. All seals can be replaced by
any authorized repair facility.

BODY ASSEMBLY
-NOT REPLACEABLE
TORQUE TO 35 FT-LB

ASSEMBLE LIP
SIDE TOWARD
BOTTOM OF PISTON

TORQUE TO
84 IN-LB

TORQUE TO
18 FT-LB

TORQUE TO
11 IN-LB

FOR MANIFOLD MOUNTING, REMOVE BHCS
& BONDED SEAL FROM BASE AND INSERT
O-RING INTO COUNTERBORE

NO	QTY	PART NO	DESCRIPTION	STD SEAL KIT	SPRING KIT
1	2	21410006	BHCS, 8-32 x 1/4, SST		
2	1	21410076	BHCS, 6-32 x 3/16 SELFLOCK, SST		
3	1	21430022	WASHER		
4	1	23355024	SPRING, COMPRESSION		X
5	1	23355025	SPRING, COMPRESSION		X
6	1	30601144	PLUG, SOCH, SAE 4		
7	1	30603322	PLUG, PIPE, HEX, HOL, 1/8 NPT, STEEL		
8	1	39000069	O-RING, (-903)	X	
9	1	39050008	O-RING, (-014)	X	
10	2	39051012	O-RING, (-109)	X	
11	1	39052057	SEAL, BEVEL, 3/32 X 5/32 X 11/32	X	
12	1	39054035	BU RING, (.157 X .089)	X	
13	2	39055022	SEAL, BONDED, M4		
14	1	81010618	PISTON, WS, FA, HC, 2000, LS		
15	1	81040610	BOLT, CONTACT, WS, FA, 1400, LS		
16	1	91040614	KIT, BASE, WS, FA, MM, HC, 2000, PPS		
17	1	39V53003	WIPER, PRESS-IN, (9/16), VBGV	X	
N/A	N/A	60100150	KIT, SEAL, WS, FA, BM, HC, 2000, LS	NOTED	N/A
N/A	N/A	61100224	KIT, SPRING, WS, FA, HC, 2000, LS	N/A	NOTED
N/A	N/A	IS1023	INSTRUCTION SHEET	N/A	N/A

PARTS LIST



VEKTEK, INC.
1334 E. SIXTH AVE. P.O. BOX 625
EMPORIA, KS. 66801 U.S.A.

ASSEMBLIES AFFECTED
10080626

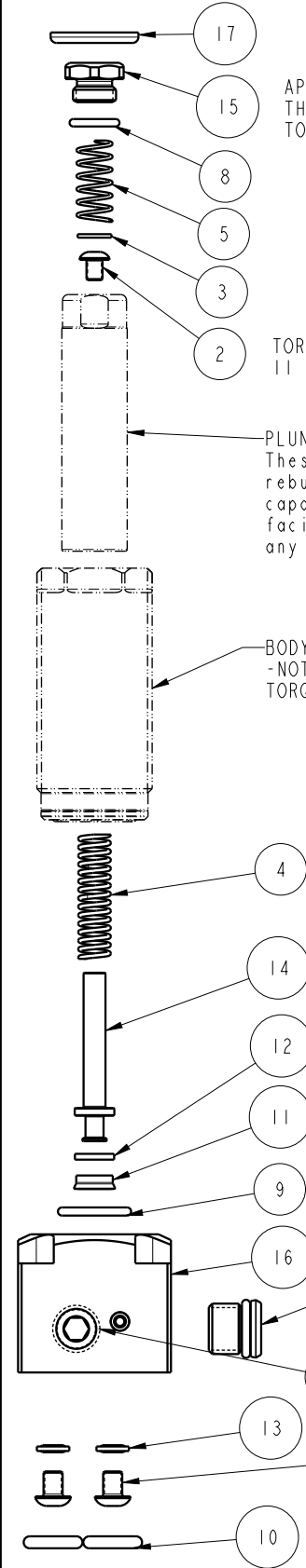
PARTS LIST, ASSY, WS, FA, BM, HC, 2000, LS

SIZE
A

PLIIII

REV
B

FORM FEG035_PL_ASIZE, REV. B



B	4993	RELEASE	RLK	12/7/22
REV	IN ACCORDANCE WITH ECN	EFFECTIVE DATE	REVISED BY	DATE
DRW BY:	ALS	DRAWING STATUS: Released		
DATE:	3/6/20	PRODUCTION APPROVED FOR RELEASED STATUS ONLY		

SHEET 1 OF 1